



griffin & ray

LED Lighting

Canopy Lights



Applications

LED Canopy light is an ideal solution for energy efficient lighting retrofits in Parking bay warehouses, gas stations, Gymnasiums, Under passes and Confined spaces.

LED lamp lasts longer – in fact, up to 50,000 hours and is best suited for applications where lighting is difficult or expensive to replace due to the accessibility of the lights.

Key Components of LED Lighting

LED is the key to the performance of lighting, it forms the major part of the lamp. Keeping the balance of performance and cost is our first priority. After a careful selection with many different performance and aging test on all possible brands. To ensure the finest LED unit is to be made with efficiency higher than 130lm/w. The standard color is cool white in color temperature of 6000K, more than 75 Ra. Giving out a clean and crisp light making all objects to appear more attractive. It is also available in warm white (color temperature 4500K and 3500K), and other customized color temperatures are available on request.

The LED Driver is known to be the heart of the luminaries. A good driver has to have a good efficiency or it will lower the efficiency of the whole system. A good driver should also be a good protector because it is the only thing between unstable electricity shocks and LED. A good driver must have a high quality, because if the driver has a problem, the whole lamp will have a problem too. Most importantly a good driver must be suitable for the LED. These drivers have high efficiency and long stable life, and also offer dimming function too.

A strong foundation is always a key to all start of the design. The housing frame uses an alloy moulded in such a way, that it highly dissipates the heat quickly. It also allows the housing to be lighter in weight without losing the strength of it. Offering a good impact protection as well as heat sink.

Heat Management

Heat management ensures the LED lives its expected lifespan, poor heat management will cause lower system efficiency and rapid decay on LED. G&R has always started heat management from LED packaging all the way to lamp design. The high heat conductive alloy module plays a key role on the design. Instead of one big heat sink to dissipate heat for all LED, cutting to several heat sink bars increases surface area further speeding up heat dissipation. The modules also have a special design airflow system using natural ventilation. Constantly providing a fresh breeze of cooling.

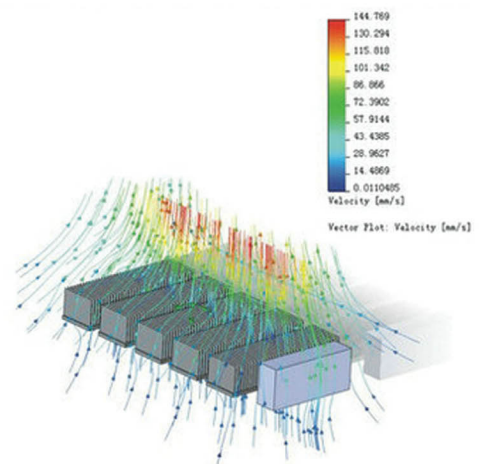
The Right LED



The Driver



Heat Conductive Alloy



60 W

LED

Canopy Light Premium

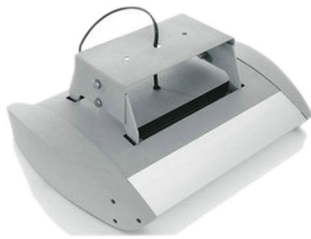
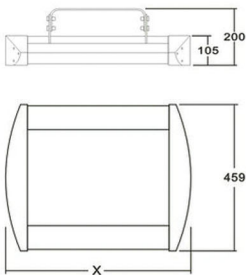
Features

- ▶ Latest MCOB Technology.
- ▶ No Flickering.
- ▶ No Halo , No Multiple Shadow Effect.
- ▶ Long Life Time 30000 to 50000 Hours.
- ▶ Cool Beam , No UV or Thermal Radiation.
- ▶ Eco-Friendly Light Source.
- ▶ Reduces Carbon Foot Print.
- ▶ Material : Aluminium Alloy

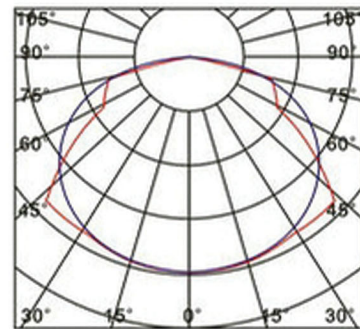


Product Code	Voltage (V)	Watts (W)	Lumens (Lm)	CRI	CCT	Number of LEDs	Net Weight	Class (IP)
GRCAN60230PR-3B-CW	100-240 AC	60	6300	70-75	6000K	60	9 kg	IP65
GRCAN60230PR-2B-CW	100-240 AC	60	5700	70-75	6000K	60	9 kg	IP65

Dimension



Luminous Intensity Distribution



www.griffin-ray.com

Griffin & Ray Inc.

5201,
Great America Park way,
Suite 256
Santa Clara
California
USA.

☎ +1 408 8459411

☎ +1 408 7776375

🌐 www.griffin-ray.com

✉ info@griffin-ray.com

