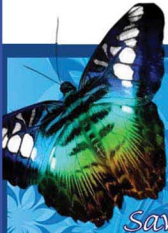


BEAT THE HEAT

SAVE ENERGY UP TO 30% ON A/C LOAD



Save Energy....Save Money!

KEVA

ENERGY SAVING PAINT

HEAT REFLECTIVE & INSULATIVE PAINT WHICH CAN REDUCE YOUR COOLING DEMANDS AND CUT DOWN YOUR ELECTRICITY BILLS UP TO 30%.



CERTIFIED BY:



Geoscience Testing Laboratory

Based on NASA Technology

What is Keva Energy Saving Paint?

Keva Energy Saving Paint is a 100% acrylic elastomeric, thermal Insulation, water proof, energy saving and water based coating. When applied as directed this product offers energy savings in both cold and hot climates as well as bridges minor surface imperfections, protects against driving rain, provides outstanding durability and offers long lasting protection. If undisturbed it does not need repllication for about ten years.

Keva Energy Saving Paint has special formulation which lowers the VOC (Volatile Organic Compounds) content that adds to the odor of most paint coatings, as well as contributes to various forms of air pollution. Once applied it acts as an invisible radiant heat reflecting barrier that improves comfort, reduces heating and cooling requirements. Keva Energy Saving Paint reduces the hear loading into a structure & reduces energy bills by up to 40% and reduces the temperature by up to 10oC hot weather.

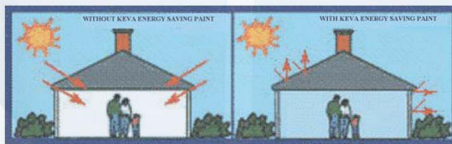
Keva Energy Saving Paint utilizes the very latest in ceramic micro-spheres similar to that used by NASA (USA) for use on the space shuttle tiles.

About KEVA Energy Saving Coating.

NASA technology has now been adopted for use in the domestic and industrial environment. Research and development has led to the production of a light elastomeric liquid solution, which is not only easy to apply to most structures but also capable of reducing the solar loading of very large surfaces in extreme sunlight.

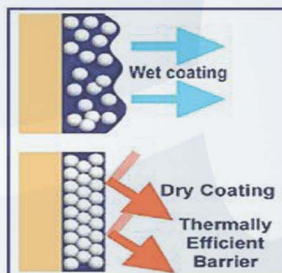
Keva Energy Saving Paint is tested in one of the most prominent laboratory in USA i.e. Geoscience Ltd. for Solar Reflectivity, Infrared Emissivity and Thermal modeling followed with excellent results. As per testing results Infrared Emissivity was notified as 0.90 under room temperature (Measurement method: ASTM E-408 C-1371) and Solar Reflectivity was notified as 0.853 (Avg. 0.87, 0.84 & 0.85) (Measurement method: ASTM E-1918)

How KEVA Energy Saving Coating Works?



The diagram above shows the difference that Keva Energy Saving Paint can make:

Keva Energy Saving Paint has ceramic micro-spheres which create a thermal barrier. They refract, reflect and dissipate heat.



Keva Energy Saving Paint contains tiny ceramic micro-spheres of 30 – 100 microns in diameter. The tiny microspheres act as highly efficient thermal barriers, so that when the coating dries, they form a barrier against heat transfer. The layer is created by the microspheres coming closer together as the coating dries, until they eventually touch each other forming a single, very thin, thermal barrier. This barrier reflects, refracts and dissipates heat, thereby keeping heat in a structure during the cold months and out of the structure during the hot months.

As they are true microspheres, the ceramic particles do not add weight but increase the strength of the coating. This helps to keep down the weight loading on the structure being coated.

Key Features:

A high-build, low lustre, flexible 100% acrylic coating. When applied as directed, up to 250 microns film thickness, this product bridges minor surface imperfections, protects against driving rain, provides out-standing durability, and offers long lasting protection. If undisturbed it does not need re-application for about ten years.

- * Electricity bills can be reduced up to 40% hence reducing heating and cooling demands.
- * Keeps you cooler in the summer and warmer in the winter.
- * High impact resistance. Resists formation of fungus and moulds on the roof.
- * Resistant to atmospheric pollution.
- * Stable over a wide range of temperature variation.
- * Non-toxic and environmentally friendly.
- * Remain intact on flexible surfaces.
- * Excellent crack bridging.
- * Exceptional film durability.
- * Resistant to Ultraviolet degradation.
- * Bond well to a wide range of surfaces.
- * Gloss retention and Mildew resistant.
- * Easy to apply.
- * Rapid drying for quick re-coating.
- * Easy cleanup with soap and water.
- * Excellent hiding.
- * Adhesion: Excellent on all substrates.
- * Colors: White.
- * Suitable for all roofs and walls.
- * Dampens sound
- * Blocks moisture.
- * Superior Radiant barrier.

Applications.



Industrial, Commercial
&
Residential Buildings



Bio Fuels



Food & Beverage
Manufacturing
and
cold Storage



Museums and
Public Buildings



Defense



saturn overseas

Keva Industries

One Lincoln Centre, 18 west
140 Butter field Road
Level 15, Oakbrook Terrace,
Illinois - 60181
USA

Saturn Overseas Trading LLC

P.O.Box.28591
Dubai, UAE.
Tel. +971 4 333 8500
Fax. +971 4 333 8650
website: www.saturngulf.com
Email: satgulf@eim.ae